



دستگاه برش فایبر

2060H



MACHINE PICTURE



دستگاه فایبر برش 2060H



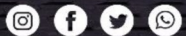
031-35131
www.simayeshahr.com



full cover metal fiber laser cutting machine 2060H



031-35131
www.simayeshahr.com



FORMAL QUOTATION

2	Configuration	#Aviation aluminum beam #Standard duty plate welded machine frame #MAX fiber laser source #Original control system FSCUT 2000 # Professional Raytools BM111 / BM110 autofocus laser head #Taiwan YYC rack and pinion transmission system #Italy Motovario/Shimpo reducer/Faston reducer #Japan Yaskawa driver and servo motor Z400/X1300/Y 1800W #Taiwan HIWIN Guide rail # Japan SMC Pneumatic component #France Schneider electronic components #China S&A/Hanli water chiller #Industrial computer Advantech
3	Default configuration	#Wireless remote controller #Automatic lubrication system #Dust cover protector #Low pressure alarm function #Automatic dust removal device #Laser abnormal alarm #Cutting abnormal alarm #Waste collection box #Gas low pressure alarm #Water cooler abnormal alarm
4	Parameter	#Working area: 6000*2000mm #Output power::3000 watts # Positioning accuracy: ± 0.03 mm # X/Y axis Repeated Position Precision: ± 0.02 mm #Maximum speed: 120 m/min #Maximum acceleration: 1.2G #Working Voltage 380V 50Hz 3 phase
5	Free parts	#Nozzles 10pcs #Protective lens 10pcs
6	Service	#Manual +Video #Three-year warranty # 24 hours online service
7	Delivery time	Within 15-25 working days after receipt of the deposit
8	Trade terms	FOB Qingdao
9	Payment terms	Alibaba Trade Assurance, T/T, Western Union 50% as deposit, the balance should to be paid before shipping.

3rd Generation Aviation Aluminum Gantry

- 1.It is manufactured with aerospace standards and formed by 4300 tons press extrusion molding.
- 2.After aging treatment, its strength can reach 6061 T6 which is the strongest strength of all gantries.
- 3.Aviation aluminum has many advantages, such as good toughness, light weight, corrosion resistance, anti-oxidation, low density, and greatly increase the processing speed.



FSCUT CYPCUT 2000

- Cypcut laser cutting system is widely used in the fiber laser cutting industry, supporting laser cutting equipment such as flat sheet metal cutting machines, combination sheet and tube cutting machines, and professional pipe cutting machines.
- Advantech industrial computer with Cypcut professional optical fiber cutting control system can cut metal plates. The cutting speed is fast, the cutting edge is perfect, the surface is smooth, and the texture is delicate.
- 3.Save the various cutting techniques to your computer before leaving the factory.



Laser head :Raytools BM111

- Selecting precision optical components, the beam quality is excellent and stable.
- Perfect water cooling structure to ensure the cooling effect of optical lens.
- High-grade dust-proof design, effectively avoid dust intrusion.
- Precision machining, stable and reliable component coordination.
- Multiple protection lenses, collimation increased protection lens, effectively protect the collimation lens.

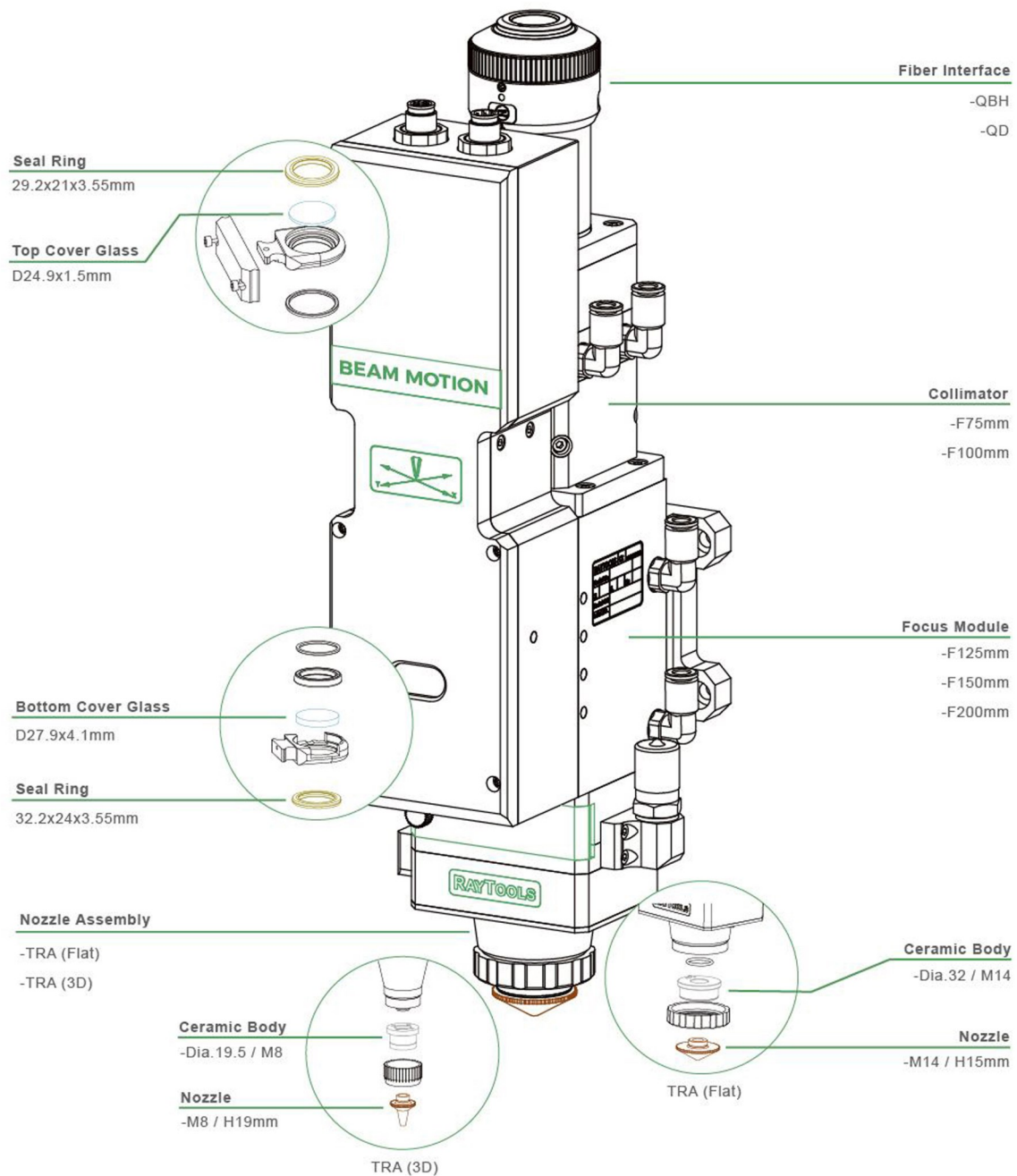


Laser Source

- High efficiency of electro-optic conversion
- Resistance to high resistance
- Efficient sheet cutting
- Output fiber length can be customized
- Maintenance free operation
- Wide modulation frequency range

RAYTOOLS BM111 SERIES

Auto Focus Laser Cutting Head



Japan Yaskawa Servo motors

Z400/X1300/Y 1800W



- High speed
- High precision
- High reliability
- Gantry double drive mechanism has high damping coefficient
- Good rigidity, could withstand high speed and high acceleration

France Schneider electrical part



- Schneider Electric offers a wide range of servo drives, servo motors and servo converting technology for a variety of applications. Schneider servo drives are suitable for systems requiring maximum efficiency, maximum positioning accuracy. Servo converters have the ability to work in multi-axis systems, providing a high speed of interaction.
- High quality ensures the possibility realizing extreme precise positioning with the excellent dynamic response acceleration property and closed loop control method, and that makes moving positioning mechanism operates monthly, reliably and free of maintenance.

Water chiller S&A or HANLI



- Professional cooling systems, refrigeration temperatures are shown in it, the water temperature in excess of the prescribed temperature refrigeration unit automatically when cooling, refrigeration unit automatically stops when the water temperature below the specified temperature refrigeration.
- Specially designed for fiber laser equipments, compatible with various brand lasers
- Full range of environmentally friendly refrigerants, worry-free export
- Laboratory inspection, quality assurance
- Stable and reliable performance, low failure rate, energy saving and power saving



Taiwan YYC rack and pinion

Excellent quality and stability. In accordance with international standard specifications, YYC uses the Deutsches Institut für Normung (DIN), Japanese Industrial Standards (JIS), as well as ISO 9001 quality certification. YYC, the leading brand of precision racks in Asia, its transmission series products have been exported to nearly 50 countries.



HIWIN Linear guideway

Linear guideways provide linear motion by re-circulating rolling elements between a profiled rail and a bearing block. The coefficient of friction on a linear guideway is only 1/50 compared to a traditional slide and they are able to take loads in all directions. With these features, a linear guideway can achieve high precision and greatly enhanced moving accuracy. Hiwin Corporation offers multiple linear guideway series, each featuring different options for sizes, loading capabilities, accuracies, and more.



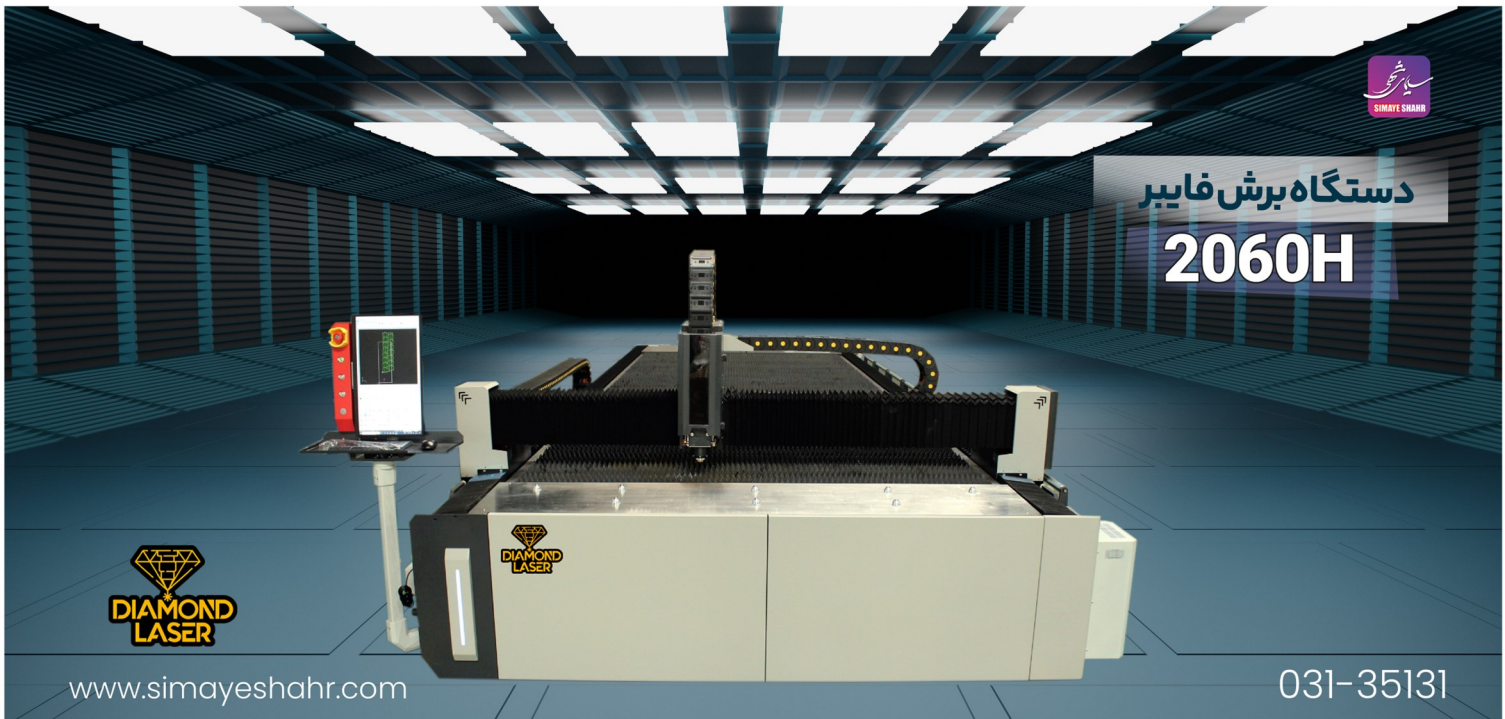
Security/stability Designing Screen

Use the high definition toughened glass screen, more exquisite and delicate, the operation is smoother.

MACHINE CUTTING PROCESS PARAMETERS

Reference table of laser cutting process parameters

		1000W	1500W	2000W	3000W	4000W	6000W	8000W	10000W	12000W	15000W
Material	Thickness	speed	speed	speed	speed	speed	speed	speed	speed m/min	speed m/min	speed
Carbon steel (Q235A)	1	8.0-10	15-26	24-30	30-40	33-43	35-44	40-50	50-70	60-75	60-80
	2	4.0-6.5	4.5-6.5	4.7-6.5	4.8-7.5	15-25	20-28.0	26-33	28-35	28-40	45-70
	3	2.4-3.0	2.6-4.0	3.0-4.8	3.3-5.0	7.0-12	13-17	15-19	16-25	18-30	38-50
	4	2.0-2.4	2.5-3.0	2.8-3.5	3.0-4.2	3.0-4.0	3.0-4.5	3.0-4.5	3.5-5.5	3.5-5.5	3.5-5.5
	5	1.5-2.0	2.0-2.5	2.2-3.0	2.6-3.5	2.7-3.6	3.0-4.2	3.0-4.2	3.3-4.0	3.3-4.8	3.3-4.8
	6	1.4-1.6	1.6-2.2	1.8-2.6	2.3-3.2	2.5-3.4	2.5-3.5	2.6-3.7	3.0-4.0	3.0-4.2	3.0-4.2
	8	0.8-1.2	1.0-1.4	1.2-1.8	1.8-2.6	2.0-3.0	2.2-3.2	2.3-3.5	2.5-3.5	2.5-3.5	2.5-3.5
	10	0.6-1.0	0.8-1.1	1.1-1.3	1.2-2.0	1.5-2.4	1.8-2.5	2-2.5	2.0-2.7	2.2-2.7	2.2-2.7
	12	0.5-0.8	0.7-1.0	0.9-1.2	1.0-1.6	1.2-1.8	1.2-2.0	1.2-2.1	1.2-2.1	1.2-2.1	1.2-2.1
	14		0.5-0.7	0.7-0.8	0.9-1.4	0.9-1.2	1.2-1.8	1.2-1.9	1.7-1.9	1.7-1.9	1.5-1.9
	16			0.6-0.7	0.7-1.0	0.8-1.0	0.8-1.3	0.8-1.5	1.1-1.7	1.2-1.7	1.2-1.7
	18			0.4-0.6	0.6-0.8	0.6-0.9	0.6-0.9	0.8-1.5	0.8-1.6	1.0-1.8	1.6-2.2
	20				0.5-0.8	0.5-0.8	0.5-0.8	0.6-1.3	0.6-1.4	0.6-1.5	1.5-2.0
	22				0.3-0.7	0.4-0.8	0.4-0.8	0.5-0.8	0.6-1.4	0.5-1.5	1.5-2.0
25						0.3-0.55	0.3-0.7	0.5-1.0	0.5-1.1	0.8-1.5	
30							0.2-0.7	0.3-0.8	0.3-0.9	0.6-1.0	



دستگاه برش فایبر

2060H



www.simayeshahr.com

031-35131

		1000W	1500W	2000W	3000W	4000W	6000W	8000W	10000W	12000W	15000W
Stainless steel (201)	1	18-25	20-27	24-30	30-35	32-45	42-52	50-65	60-72	70-85	72-100
	2	5-7.5	8.0-12	9.0-12	13-21	16-28	20-33	30-40	35-45	40-66	45-70
	3	1.8-2.5	3.0-5.0	4.0-6.5	6.0-10	7.0-15	15-22	18-27	20-30	35-45	38-50
	4	1.2-1.3	1.5-2.4	3.0-4.2	4.0-6.0	5.0-8.0	10-15	12-16	15-22	20-32	25-35
	5	0.6-0.7	0.7-1.3	1.8-2.5	3.0-5.0	3.5-5.0	8.0-12	10-15	10-18	18-25	20-30
	6		0.7-1.0	1.2-1.8	2.0-4.0	2.5-4.5	4.8-8.0	6.0-10.0	8-12	12-15	15.0-25.0
	8			0.7-1.0	1.5-2.0	1.2-2.0	3.0-4.0	3.5-5.0	5.0-7.5	8-12	8.0-12.0
	10				0.6-0.8	0.8-1.2	1.6-2.5	2.0-2.7	3.0-7.0	6.0-8.0	6.0-10.0
	12				0.4-0.6	0.5-0.8	0.8-1.5	1.2-2.0	2.5-3.9	4.0-5.5	4.0-6.0
	14					0.4-0.6	0.6-0.8	1.2-1.8	1.8-2.8	3.0-5.0	3.5-6.0
	16						0.5-0.8	1.0-1.6	1.7-2.3	2.2-2.8	2.5-3.0
	18						0.4-0.6	0.8-1.2	1.2-1.8	1.2-2.0	1.2-2.2
	20						0.3-0.5	0.4-0.7	0.9-1.5	1.0-1.6	1.3-1.8
	25						0.2-0.4	0.3-0.5	0.6-0.7	0.5-0.8	0.6-1.2
	30							0.2-0.4	0.3-0.6	0.3-0.6	0.5-1.0
	35								0.3-0.5	0.3-0.5	0.4-0.8
40								0.3-0.5	0.3-0.5	0.3-0.6	
45									0.3-0.4	0.2-0.5	
50										0.2-0.5	

		1000W	1500W	2000W	3000W	4000W	6000W	8000W	10000W	12000W	15000W
Brass	1	6.0-10	8.0-13	10-16	20-35	25-35	35-45	40-55	50-60	55-65	75-85
	2	2.8-3.6	3.0-4.5	4.5-7.5	6.0-10	8.0-12	20-30	28-40	33-40	38-50	40-55
	3	0.5-1.0	1.5-2.5	2.5-4.0	4.0-6.0	5.0-8.0	12-18	20-30	15-23	20-30	32-50
	4		1.0-1.6	1.5-2.0	3.0-5.0	3.2-5.5	5.0-8.0	10-15	10-16	15-20	27-35
	5		0.5-0.7	0.9-1.2	1.5-2.0	2.0-3.0	4.5-6.0	6.0-9.0	9.0-13	10-15	18-26
	6			0.4-0.7	1.0-1.8	1.4-2.0	3.0-4.5	4.5-6.5	7.0-9.0	6.0-8.0	10-18
	8				0.5-0.7	0.7-1.2	1.6-2.2	2.4-4.0	4.5-6.5	5.0-7.0	8.0-10.0
	10					0.2-0.5	0.8-1.2	1.5-2.2	2.4-4.0	4.5-6.5	5.0-7.0
	12						0.3-0.5	0.8-1.2	1.5-2.2	2.4-4.0	2.8-4.2
	14						0.3-0.4	0.4-0.6	0.6-1.2	0.8-1.5	1.0-1.8
	16							0.3-0.5	0.4-0.6	0.6-1.2	0.8-1.5
	18								0.3-0.5	0.4-0.6	0.6-0.8
	20									0.3-0.5	0.4-0.6
	25										0.3-0.5

		1000W	1500W	2000W	3000W	4000W	6000W	8000W	10000W	12000W	15000W
Aluminum	1	6.0-10	10-20	15-25	25-38	35-45	42-55	48-65	55-65	60-85	70-100
	2	2.8-3.6	5.0-7.0	7-10	10-18	13-24	20-40	25-48	33-45	38-50	40-55
	3	0.7-1.5	2.0-4.0	4.0-6.0	6.5-8.0	7.0-13	15-25	20-33	25-35	30-40	35-45
	4		1.0-1.5	2.0-3.0	3.5-5.0	4.0-5.5	9.5-12	13-18	15-25	20-30	30-40
	5		0.7-1.0	1.2-1.8	2.5-3.5	3.0-4.5	5.0-8.0	9.0-12	13-20	15-25	20-30
	6			0.7-1.0	1.5-2.5	2.0-3.5	3.8-5.0	4.5-8.0	9.0-12	10-15	15-24
	8			0.6-0.8	0.7-1.0	0.9-1.6	2.0-2.5	4.0-5.5	4.5-6.5	7.0-12	8.0-12.0
	10				0.4-0.7	0.6-1.2	1.0-1.5	2.2-3.0	2.8-4.0	4.5-8.0	6.0-10.0
	12				0.3-0.45	0.4-0.6	0.8-1.0	1.5-1.8	1.9-2.5	4.0-5.0	4.0-6.0
	16					0.3-0.4	0.5-0.8	1.0-1.6	1.5-2.0	1.5-2.5	2.0-3.0
	20						0.5-0.7	0.7-1.0	0.8-1.2	0.9-1.5	1.3-1.8
	25						0.3-0.5	0.4-0.7	0.6-0.8	0.6-0.9	0.6-1.2
	30							0.3-0.6	0.3-0.7	0.3-0.8	0.5-1.0
	35									0.3-0.6	0.3-0.8
	40									0.2-0.4	0.2-0.5
	50									0.1-0.2	0.3-0.7
60										0.2-0.5	

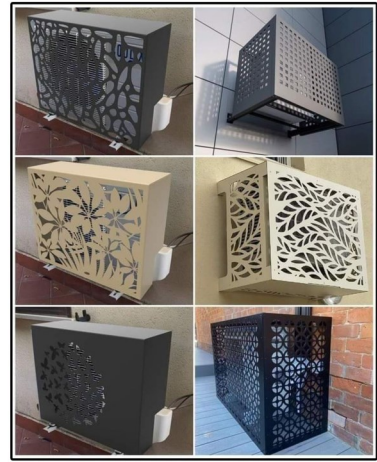
CUTTING SAMPLE



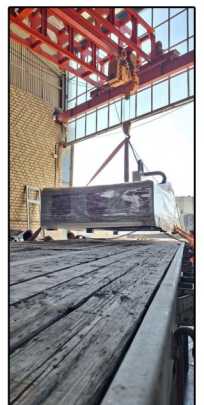
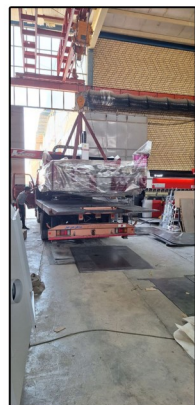
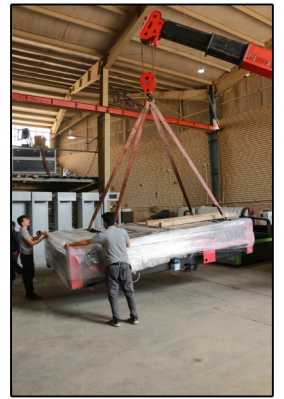
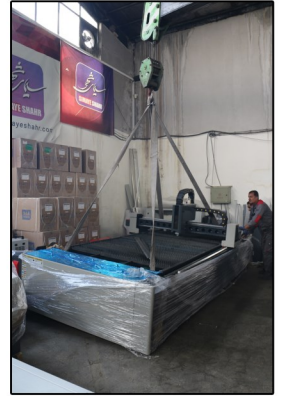
QUALITY CONTROL

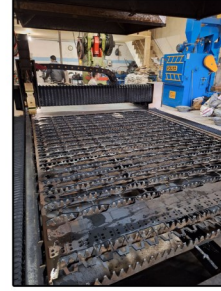
MACHINE DELIVERY

MACHINE INSTALLATION AND SERVICE











اصفهان . ارغوانیه . بلوار سروستان . پلاک ۳۹

www.simayeshahr.com

031-35131